



Shropshire Community Health Trust

Organisation Structure 2024

Our Trust Board



Patricia Davies
Chief Executive



Andrew Morgan
Chair-in-Common



Jill Barker
NED



Peter Fetherstone
NED



Cathy Purt
NED



Alison Sargeant
NED



Harmesh Darbhanga
NED



Tina Long
NED



Sarah Lloyd
Deputy Chief Executive
Director of Finance



Clair Hobbs
Director of Nursing, Quality, &
Service Delivery



Shelley Ramtuhul
Director of Governance



Claire Horsfield
Director of Operations / Chief
AHP



Mahadeva Ganesh
Medical Director

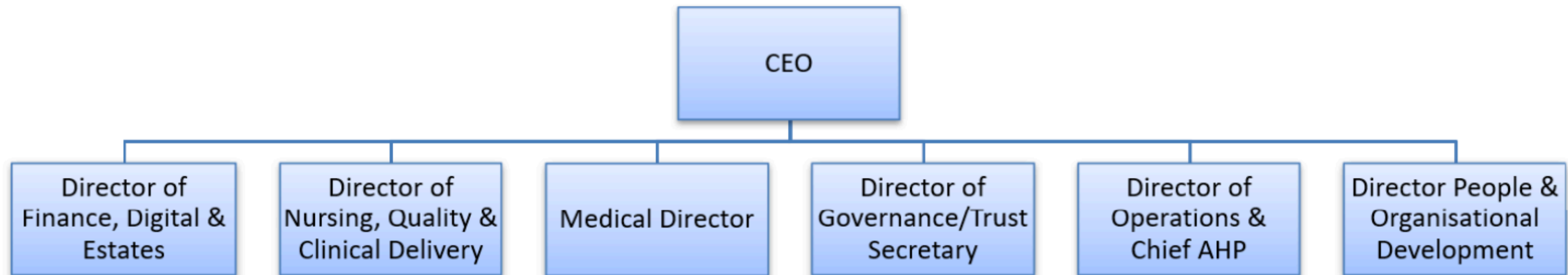


Rhia Boyode
Chief People Officer



Patricia Davies, Chief Executive

- Executive Assistant Stacey Worthington





Sarah Lloyd, Deputy Chief Executive and Director of Finance

- Executive Assistant Poppy Owens

Jon Davis

Associate Director
Digital Services

- IT including Cybersecurity
- Information/Performance
- RiO system and digital development
- PMO

Jonathan Gould

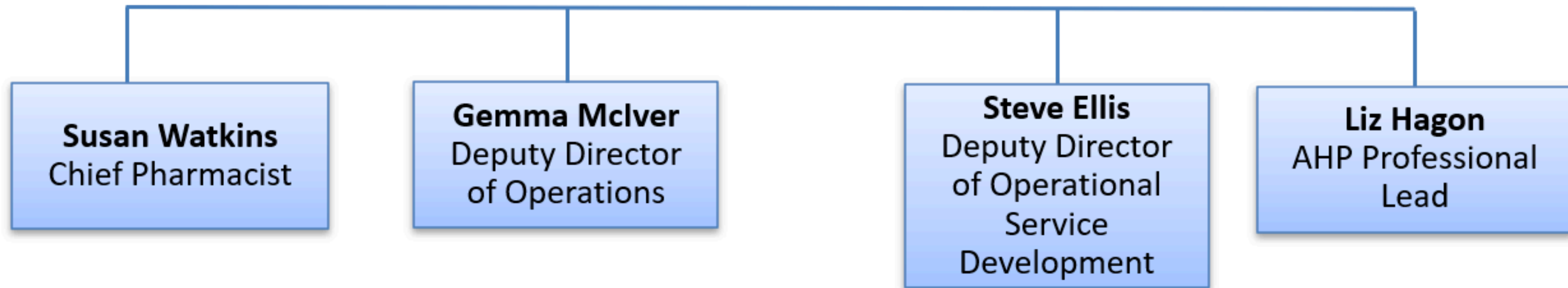
Deputy Chief Finance Officer

- Counter Fraud
- Finance
- Estates
- Procurement
- Planning & Development
- Covid Vaccination Commission



Claire Horsfield, Director of Operations & Chief AHP

- Executive Assistant Diane Davenport



Gemma McIver
Deputy Director of
Operations

Sarah Robinson
Divisional Clinical
Manager – Urgent and
Emergency Care

- Virtual Ward
- Rapid Response
- Single Point of Referral (SPR)
- Integrated Discharge Team
- Capacity Hub
- Diagnostic Assessment & Access to Rehab & Treatment (DAART)
- MIU
- Outpatient. Parenteral Antimicrobial Therapy (OPAT)

Helen Cooper
Divisional Clinical
Manager – Children &
Young People and
Planned Care

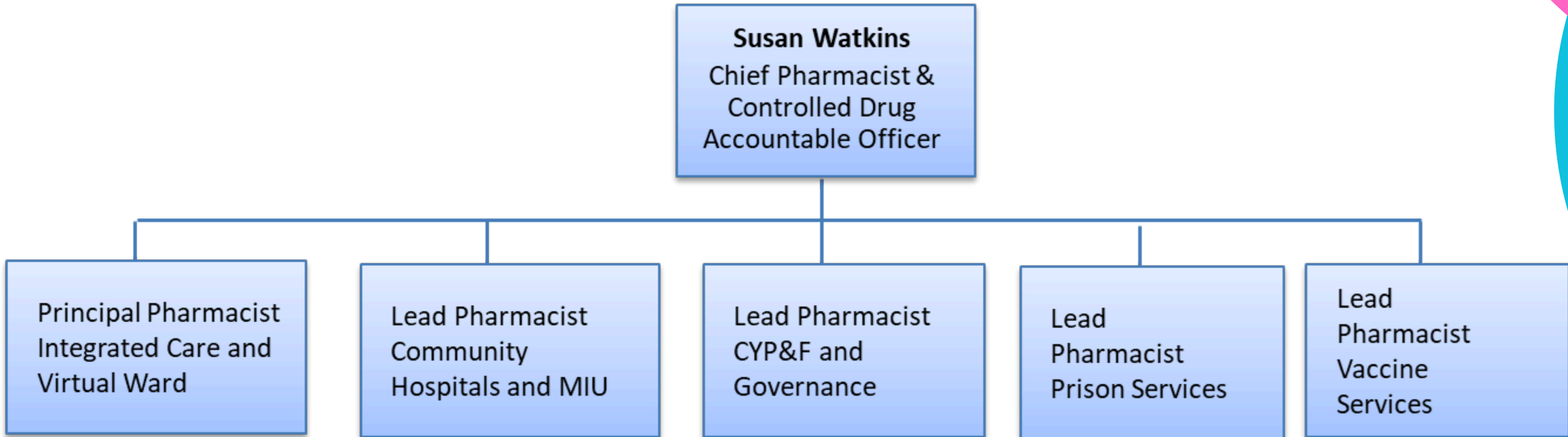
- Advanced Primary Care Services (APCS)
- Community Consultant Outpatients
- Prison Healthcare
- Falls Prevention
- Podiatry
- Musculoskeletal - TeMS MSST
- Outpatient Physio
- Day Surgery Unit
- Wheelchair services
- Long covid coordination

Sam Townsend
Divisional Clinical
Manager – Adults and
Community Services

- Child Development Centres (CDC)
- Community Paediatrics
- Child Health and Audiology
- Children's Therapy Services
- Community Children's Nursing
- Paediatric Diabetic Specialist Nursing
- School Nurses
- Special Schools Nursing
- Family Nurse Partnership (FNP)
- Health Visitors
- Childrens Imms & Vaccs
- Dental Services
- Childrens Psychology
- Covid Vaccination
- Covid Medicines Delivery Unit (CMDU)

Brian McMillan
EPRR Senior Lead

- Community Hospitals
- Community Nursing
- Community Therapy
- Rehab & Recovery Units
- Admiral Nursing
- Community Neuro Rehab Team (CNRT)
- Respiratory
- Pulmonary Rehab
- Tissue Viability
- Wound Healing
- Continence
- Diabetes
- ACP in Care Homes





Shelley Ramtuhul, Director of Governance and Trust Secretary

- Executive Assistant Stacey Worthington

Gill Richards Associate Director Governance
<ul style="list-style-type: none">• Patient Safety• Clinical Effectiveness• Information Governance• Policy and Procedure Management• Clinical governance data• Patient Experience /Complaints/PALs• Freedom of Information

Olivia Siegl Head of Communications
<ul style="list-style-type: none">• Internal Communications• External Communications• Corporate branding• Corporate events and campaigns

Ian Gingell Health and Safety Officer
<ul style="list-style-type: none">• Health and Safety• Medical Devices• Security Management

Stacey Worthington Corporate Secretariat Manager
<ul style="list-style-type: none">• Committee and Board Management• Front of House• Chief Executive's Office Management• Chair's Office Management



Clair Hobbs, Director of Nursing, Quality, and Service Delivery (incl. Exec responsibility for Safeguarding, IPC, FTSU and Accountable Emergency Officer)

- Executive Assistant Jessica Donegan

Tracie Black Associate Director for Workforce, Education and Professional Standards

- Clinical Education
- Safer staffing
- Professional standards

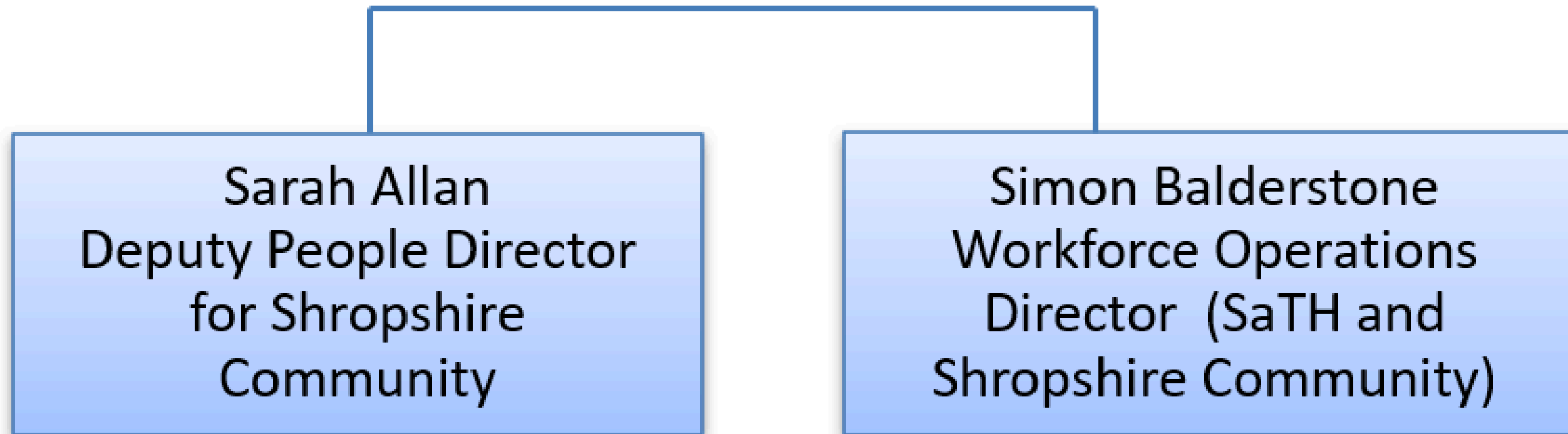
Sara Ellis-Anderson, Deputy Director of Nursing and Quality and Deputy DiPC

- Quality improvement
- Patient Safety
- Safeguarding
- Patient experience
- IPC



Rhia Boyode, Chief People Officer for Shropshire Community Health and The Shrewsbury and Telford NHS Trust

- Executive Assistant Kelly Hall





Mahadeva Ganesh, Medical Director and Caldicott Guardian

- Executive Assistant Diane Davenport

Associate Medical Director
Dr Patrick Staite

- Prison-GP
- Capital and Estates meeting as a clinical representative.

Associate Medical Director
Dr Emily Peer

- GPwSI and Medical Lead DAART (Diagnostic Assessment & Access to Rehabilitation & Treatment)
- Medical Governance Lead for Community Hospitals, MIU and community services (including IRMER sign off)
- Medical Medicines Management Lead (including sign off)
- Appraisal Lead
- Resuscitation Lead
- Clinical Policies Lead

Associate Medical Director
Tom Seager

- Clinical Director Community Dental Service and Oral Health Improvement Service
- Radiation Protection Committee Chair
- Local Dental Council STW Community Dental service representative
- Local Dental Network- Shropshire and Staffordshire member (Community Dental Service)

Associate Medical Director
Dr Louise Warburton

- Research Lead
- GP with special interest in MUSST
- Research Champion for the CRN (Clinical research network)

The End